

Monthly **WONPOONG**

April 2017



Copyright ©2017 Wonpoong Corp. All rights reserved.

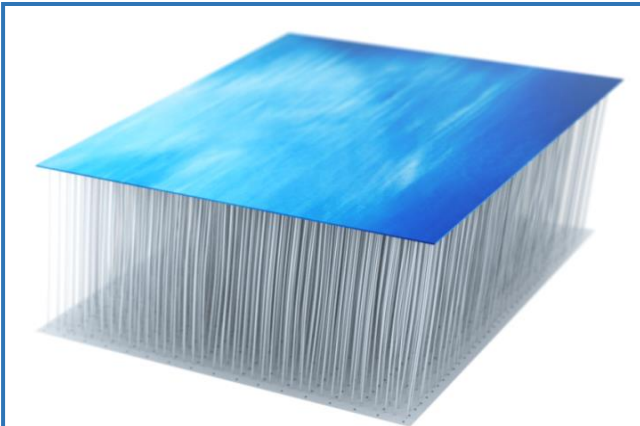
Monthly Wonpoong

April 2017

Wonpoong's **AQUAFLOAT** Drop-Stitch Fabric

01. Inspirational Surface Design

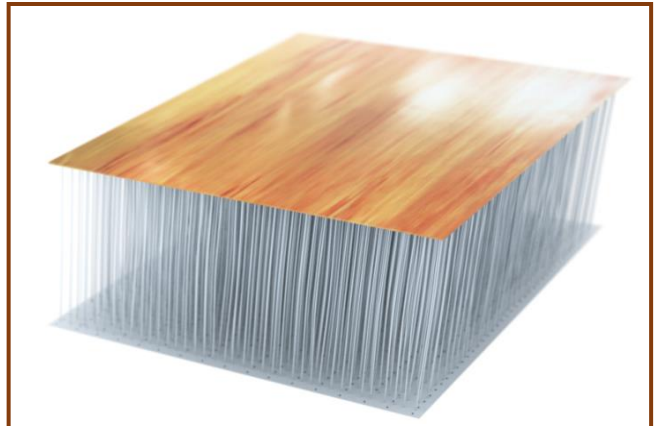
Beautiful Ocean-like Design



The marble drop-stitch fabric, which has two harmonic colors, is produced by scattering blue and white pigments on a base film.

The marble surface, which is reminiscent of a blue ocean, is not a simple repetitive pattern, but rather a natural-looking design.

Natural Wood-like Design



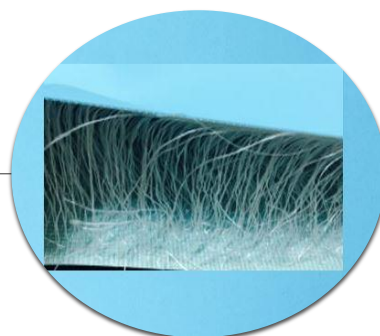
Incan fishermen in Peru use reeds and bamboo to construct a small 10-to-30-foot raft to enjoy fishing, and surfing with their peers after work. This invention is considered to be the origin of modern surfing. This design is inspired by the wooden raft that originated the stand-up paddleboard.

Vivid Color

We are focusing on expanding the color palette of drop-stitch fabric products. Since our product features stylish, vivid colors that are clearer and brighter than ever, it suits for a wide range of water sport products. We can also produce various pattern-printed drop-stitch fabrics that feature camouflage and a number of other repetitive patterns.



Light Green



Light Blue



Light Yellow

Monthly Wonpoong

April 2017

Wonpoong's **AQUAFLOAT** Drop-Stitch Fabric

02. Hetero Pattern Drop-Stitch Fabric

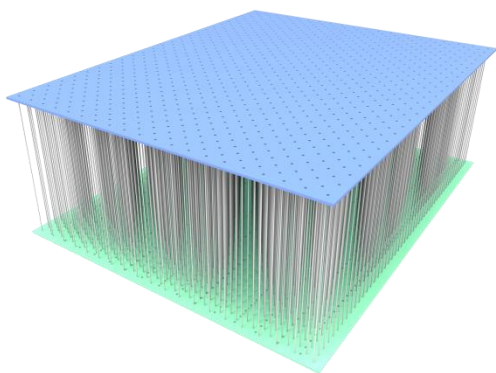
Hetero Pattern

The Hetero Pattern drop-stitch fabric is another product that shows our specialized Simul® technology, which manufactures the product as an integral structure, from the weaving of the thread core to the wide range of final surface treatments and coating solutions. The distinctive feature of this Hetero Pattern drop-stitch fabric is that the upper and lower layers, which are connected by a polyester thread core, each have different weaving patterns.

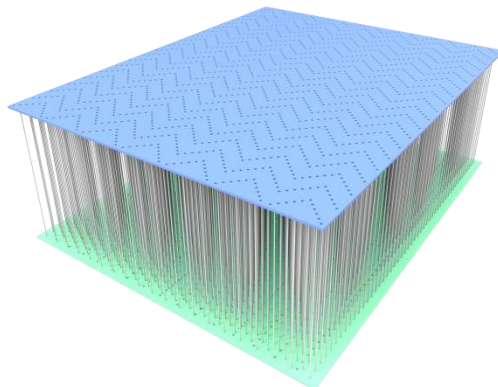
The **stripe pattern** used in the lower layer minimizes hull resistance and optimizes the speed performance with a straight-lined pattern. It is especially suitable for helping SUPs and inflatable rafting boats maintain speed in rough waters.

The **dot pattern** and **diamond pattern** used in the upper layers enhance structural stability. Because the surface is smooth yet stiff, it is also good for a wide range of water sport equipment, such as stand-up paddleboards, boat bottoms, portable boat docks, and so on. In addition, the **wave pattern** is convenient for fabricators to manufacture, because it is designed to help create a curved shape.

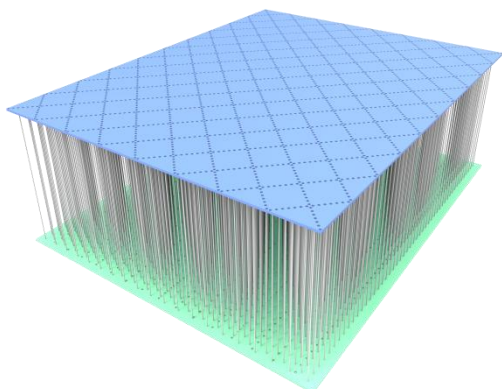
DOT PATTERN



WAVE PATTERN



DIAMOND PATTERN



STRIPE PATTERN

